



# AUTOPACT

Mechanical Protection Plan

**PlatinumOne**  
PROTECTION PLAN  
FOR USED VEHICLES  
*Drive away happy*

## Mechanical Protection Plans for Pre Owned Vehicles

### PlatinumOne

Parts covered are those that are covered under the Manufacturer's New Vehicle Warranty, except for paint and trim.

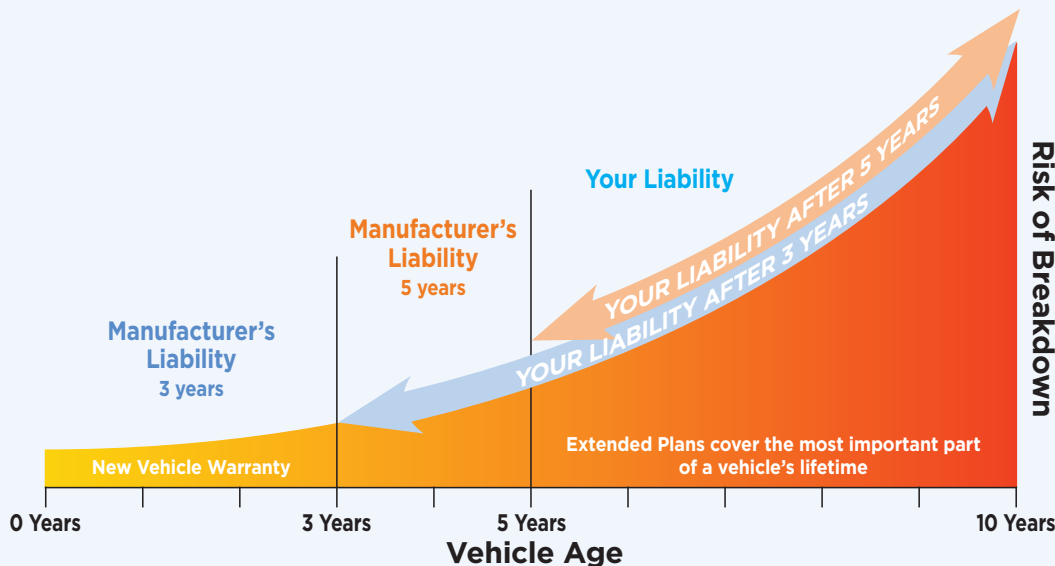
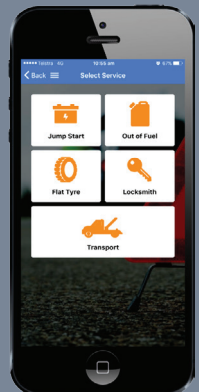
Refer to any exclusions that are shown in your Manufacturer's handbook.

Cover	PlatinumOne
Parts covered	As per manufacturer's*
Term	1 or 3 yrs / 250,000 km
Per claim limit	\$8,000
Total claims limit	Unlimited*
Extras	Platinum Plus Roadside
Service and Tyre Credit	\$250 Only redeemed at Autopact
Km restriction	Under 120,000 km at delivery
Age restriction	Under 8 yrs at delivery
Cost	1 yr \$995, 3 yrs \$2,685

Cooling off period expires at time of delivery.

\*Refer to policy document

Extras	Platinum Plus Roadside					Download your Roadside App
	OTHER PROVIDER					
Inclusions	Roadside	Extra	Plus Care	Ultra Care	Ultimate	Platinum Plus
Price p.a.	\$106	\$118	\$178	\$226	\$310	Included
Break Down - Towing	20km	35km	50km	60km	100km	250km round trip Emergency towing: Up to \$200 per year onward travel expenses
Emergency Fuel	Driver pays	Driver pays	Up to 3 times p.a.	Up to 3 times p.a.	Up to 4 times p.a.	Up to 5 litres free
Taxi	x	x	Up to \$27 p.a.	Up to \$55 p.a.	Up to \$150 p.a.	Major failure extras up to \$1200 per year (combined) – Car hire (up to \$120/day), accommodation (\$250/day), emergency travel fares (up to \$300 per ticket), trailer hire (\$120/day), additional transport fees (up to \$400 per breakdown)
Rental Vehicle	x	x	x	Up to 1 day/ \$220 p.a.	Up to 3 days/ \$330 p.a.	
Specialist Towing	x	x	Up to \$110 p.a.	Up to \$165 p.a.	Up to \$250 p.a.	
Emergency Locksmith	x	x	Up to \$110 p.a.	Up to \$165 p.a.	Up to \$300 p.a.	Up to \$250 per year



### Conditions

#### Servicing

At an Autopact Service Centre

#### How often

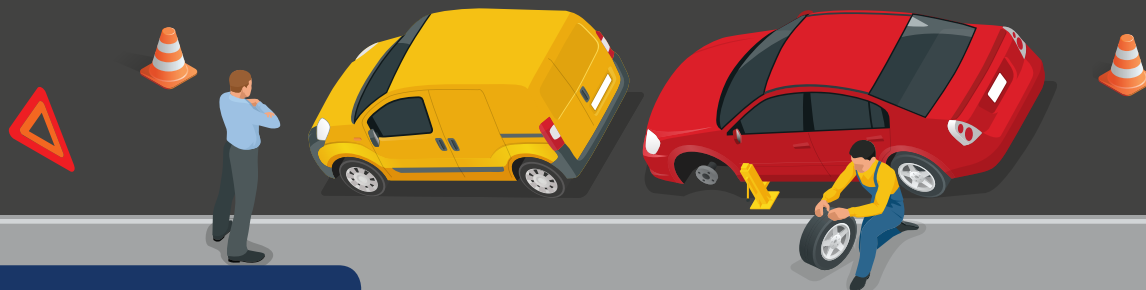
As per owner's manual

#### How much

Fixed price after factory warranty expires:

Petrol \$299 Diesel \$349

Autopact Pty Ltd  
ABN 44 608 040 606  
02/23



## Platinum Plus Roadside

[nationalroadsideassist.com.au](http://nationalroadsideassist.com.au)

National Roadside Assist offers a nationwide emergency breakdown program with over 1700 service providers on our network in Australia and New Zealand, on call 24 hours, 7 days a week delivering peace of mind motoring with quality road rescue services.

With our reliable nationwide network NRA provides a high standard of fast, professional service.

### Roadside Response

Simply call our toll free number. We will jump start your car when you get a flat 12V starter battery, fit your spare when you get a flat tyre, gain access to your vehicle when you've locked your keys/key card inside (**up to \$250 per year**), bring some petrol for you when you run out (**up to 5lt free**) or if your EV runs out of charge we will tow it to the nearest charging facility/home (towing free service radius applies, excludes charging costs).

### Towing Breakdown

If you break down, we will transport you back to the dealership where you bought your car within a **250km round trip**, or to the nearest authorised service centre if during business hours. If your vehicle breaks down due to failure and requires emergency towing, we will reimburse up to **\$200** per year for onward travel expenses.

If you break down whilst towing your **caravan or trailer (up to 3.5 tonnes)**, we will assist with transporting your caravan/trailer home or to a secure location of your choice, **within the 250km round trip** limit.

## EXTRAS up to \$1,200 per year

### Car Hire, Accommodation, Emergency Travel Fares, Trailer Hire, Transport Fees, Ambulance Cover

In the event of a major vehicle breakdown, we will assist with reimbursement of immediate costs of any combination of the following: Car Hire (up to **\$120** p/day), Emergency accommodation (**\$250** p/day), emergency travel (airfare/bus/train up to **\$300** per ticket), Trailer Hire (**\$120** p/day), additional transport fees (Long Distance Transport ie: Roadtrain or Vehicle Transporter up to **\$400** per breakdown). Excludes fuel, electric charge costs, km charges, administration charges, credit card charges, Vehicle Registration Recovery Fees, rental/travel insurance/cover/excess reduction, one-way drop off/collection fees, premium location fees, additional driver and driver under 25 years fees, excess baggage, airport taxes, any optional extras, meals and refreshments.

### Ambulance Cover

In the event of an accident where the registered vehicle is involved, and as a result, the driver or passengers require an ambulance, we will assist with reimbursement of ambulance fees. **Reimbursement of claims under the Extras cover will only be approved if there is a major vehicle breakdown resulting in a tow/call-out by NRA.**

### Free Medical and Legal Advice

Free limited medical advice is available to the driver and/or passengers of the registered vehicle. Telephone legal advice is available 24 hours a day on matters arising from the use or ownership of the registered vehicle.

### National Roadside Assist App



All service providers communicate via radio, satellite navigation or mobile phone ensuring NRA's ability to monitor progress of individual call outs, and log successful completion of each job.

Platinum Plus cover provides your vehicle with the following fantastic benefits to keep you secure whilst you meet your servicing requirements.

Visit [nationalroadsideassist.com.au](http://nationalroadsideassist.com.au) for details.

### Exclusions & Limitations

1. Trucks, buses, vehicles used for hire or reward including, but not limited to taxis, limousines, chauffeured vehicles and rental/loan cars.
2. Vehicles that require excess labour, specialist/heavy equipment (i.e. trolley wheels, cradle lift trucks, non-standard ramps) for removal, extraction from multi-storey or underground car parks, are bogged, in a National park, or are not within easy reach of a public/sealed road.
3. Vehicles already at a repairer and vehicles which have been involved in an accident/collision or have sustained damage due to impact, malicious or criminal damage and/or flood/fire damage, stolen vehicles that require recovery.
4. Excess labour and battery installation fees, heavy vehicles, trucks and equipment over 3.5t gross weight.
5. Ferry/barge costs, freight costs, including tolls and sea crossings.
6. National Roadside Assist will not be liable for increased/additional costs and expenses as a result of a breakdown in a remote location.
7. Service may be refused for unregistered vehicles and vehicles that are not roadworthy or that have been modified from the manufacturer's specifications i.e. excessively lowered vehicles, modified for racing/4x4 tracks or is being used for any form of motor sport.
8. Repeated/excessive call-outs due to driver related faults, customers not complying with our instructions, aftermarket accessories, vehicle neglect or abuse, as reasonably determined by NRA or its contractors, including pre-existing faults and faults/breakdowns caused by a non-authorised repairer.
9. NRA at its discretion may refuse service or suspend/cancel a driver's membership if they are deemed abusive, threatening or violent towards NRA staff or its contractors, or attempts to receive service by deception or has any excess owing for previous call-outs.
10. In the event that a driver requests their vehicle be broken into, whether to recover keys/belongings, NRA or its contractors will not accept responsibility or liability for damage that may occur as a result.
11. Where the customer is not in attendance at the vehicle, without prior arrangement, and the service vehicle leaves the scene, any further call-outs for that breakdown will be at the driver's expense.
12. If a driver requests a spare tyre be fitted to the registered vehicle due to a non-impact related flat tyre, it is their responsibility to correctly inform NRA as to both the presence and condition of the spare tyre in the vehicle. If incorrect information is given, or NRA attends to find the spare wheel not roadworthy or not present, all further assistance including towing/transport to a tyre/service/repair centre will be at the driver's expense for the current breakdown.
13. Vehicles which have been refuelled with the wrong type of fuel.

National Roadside Assist

1800 817 877



# Don't use it Don't lose it! You Will Receive

Refund equal to 50% of the original purchase price of the plan.  
(GST Inclusive)

## Gimmick Free Guaranteed

You don't need to mention this in any of your dealings for your replacement vehicle. Simply present this page after the deal is done and we will have a cheque ready for you on delivery\*, or if you'd prefer we can reduce the final negotiated price of the replacement vehicle.

\* The request for a refund must be presented before delivery or a refund cannot be made.

### 3 Easy Steps To Qualify for a Refund

1. The plan must be currently active (i.e. within the plan term and with services maintained in accordance with the terms and conditions of the plan). 2. No claims have been made. 3. You are trading in your vehicle and buying another vehicle from any of the Autopact dealerships.

## Service Department Locations

### New South Wales

#### Bathurst

Bathurst Motor Group | 02 6338 2000  
10 Corporation Avenue, Bathurst  
Dealer Licence: MD21051

#### Dubbo

Clancy Automotive | 02 6884 9755  
94 - 100 Wheelers Lane, Dubbo  
Dealer Licence: MVRL47969

Western Plains Automotive | 02 6885 2911  
59-71 Victoria St, Dubbo  
Dealer Licence: MVRL50414

#### Orange

Orange Motor Group | 02 6362 7169  
8 - 14 Gateway Cres, Orange  
Dealer Licence: MVRL50157

#### Tweed Heads

Cricks Tweed | 07 5506 0900  
146 Minjungbal Dr, Tweed Heads  
Dealer Licence: MD20921

#### Wollongong

Gateway Automotive | 02 4222 8888  
Cnr Mt Ousley Rd & Princes Hwy, Fairy Meadow  
Dealer Licence: MD19816

### Queensland

#### Brisbane

Cricks Highway | 07 3808 1111  
3481 Pacific Hwy, Springwood  
Dealer Licence: 365 5366

#### Rockhampton

DC Motors | 07 4999 1200  
Cnr Derby St & Campbell St, Rockhampton  
Dealer Licence: 314 5708

Rockhampton Auto Group | 07 4922 1000  
112-118 Musgrave Street, North Rockhampton

#### Sunshine Coast

Garry Crick's (Nambour) Pty Ltd - Dealer Licence: 180 6686

Cricks Maroochydore | 07 5450 3300  
88 Sugar Rd, Maroochydore

Cricks Wises Maroochydore | 07 5409 4100  
12-14 Wises Rd, Maroochydore

Cricks Nambour | 07 5441 9500  
952 Nambour Connection Rd, Nambour

Cricks Noosa | 07 5440 3600  
'Autopark' Lot 4 Lionel Donovan Drv, Noosaville

Cricks VW Sunshine Coast | 07 5373 3100  
6 Flinders Ln, Maroochydore

Caloundra City Autos | 07 5491 5522  
45 Caloundra Road, Caloundra  
Dealer Licence: 1806686

### Victoria

Dealer Licence: LMCT 11720

Bayford Ford Bundoora | 03 9467 5533  
475 Grimshaw St, Bundoora

Bayford Ford Coburg | 03 9297 5100  
683 Sydney Rd, Coburg

Bayford Ford Epping | 03 9401 8888  
356 Cooper St, Epping

Bayford Volkswagen Camberwell | 03 9811 1888  
675 Burwood Rd, Hawthorn East

Bayford Volkswagen Epping | 03 9409 9000  
350 Cooper St, Epping

Bayford Volkswagen Fairfield | 03 9471 5500  
415 Heidelberg Rd, Fairfield

Blackburn Kia | 03 9894 2244  
135 Whitehorse Rd, Blackburn

Blackburn Nissan | 03 9894 2244  
138 Whitehorse Rd, Blackburn

Burwood Nissan | 03 9273 7222  
101 Burwood Hwy, Burwood

Burwood GWM Haval | 03 9273 7222  
101 Burwood Hwy, Burwood

Etheridge Ford Ringwood | 03 9298 5200  
495 Maroondah Highway, Ringwood

Etheridge Ford Lilydale | 03 9735 7600  
30-32 John Street, Lilydale

# AUTOPACT

Autopact Pty Ltd | [www.autopact.com.au](http://www.autopact.com.au) | ABN: 44 608 040 606

02/23